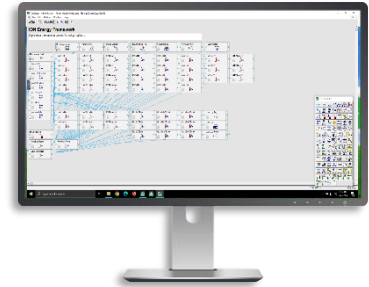


EcoStruxure™ Power Monitoring Expert (PME)

ION Architecture Programming using Designer (PMEIONPROG300)

Description:

Formerly known as Advanced Programming, this 4-day Instructor-Led Factory Training course focuses on system and device level customization using the Designer Application in PME. Through a series of presentations and hands-on lab exercises, students will learn the architecture of ION meters, as well as how to create custom programs for equipment monitoring, alarming, and logging. They will also learn the Virtual ION Processor (VIP) for programming Modbus meters and 3rd party equipment. PME Designer and TGML Graphics Editor will also be covered, as well as an overview of how programs can be used in PME's graphic screens. Students will create multiple frameworks for integrating WAGES devices, control and process applications, logging, alarming, and custom calculations.



Audience:

This course is intended for meter/instrumentation technicians, system engineers, and system integrators who need to learn how to get the most out of their PME software and associated meters.

Course Details:

Duration:

- 4-Days

Delivery Options:

- Classroom (CR)
- Virtual Instructor-Led (VILT)

Product Numbers (SKU):

- (CR) 3000PMUC4DAY
- (VILT) 3000PMUWEB4DAY

Registration:

[Click here](#) to view available dates and to register for this course, or visit pmustraining.com

Prerequisites:

- Basic familiarity with PME
- Basic familiarity with Microsoft Windows operating systems
- Basic familiarity with power and energy topics & terms

Students will be provided:

- Course material including presentations, labs, etc.
- Access to demo software & hardware
- Certificate of completion
- CEUs: 2.4

Agenda:

Day 1	Day 2	Day 3	Day 4
ION Architecture & ION Modules	TGML & Designer Integration	Clock Module	Setpoint Module
Designer Navigation & Interface	Counter Module	Periodic Timer Module	Digital I/O
ION Meter Back-up & Restore	Arithmetic Module	Data Logging Framework	Modbus Mastering

This course typically runs **Monday – Thursday, 9am – 4pm (CT)** unless otherwise noted during the registration process.

Question? Email pmu@se.com